

Pak'ntainer[®] Self-Contained Compactor/Container



*Portable
design for easy
placement!*



RAMJET 
Stationary and self-contained compactors.



**Environmental
Solutions Group**

A DOVER COMPANY

Supermarkets

Restaurants

Hospitals

Clinics

Nursing Homes

Shopping Centers

Hotels

Inflight Kitchens

Malls

*Manufacturing
Facilities*

Schools

Convenience Stores

Marathon's Pak'ntainer® (MPT) Available in 5.5 Cubic Yard Front- Load Models



Ideally suited for weekly
volumes of less than 120 cubic
yards (92 cubic meters) of
uncompacted wet or dry/general
waste materials

**Marathon's Pak'ntainer is a
portable and economical self-contained
compactor/container with a remote power pack.**

It's designed for compacting and containing wet or dry waste and simplifying waste dumping.

The Pak'ntainer helps maintain a sanitary environment, while saving money, for those generating as little as 20 cubic yards of refuse a week. Place the Pak'ntainer wherever needed, whenever needed — temporarily or permanently — no anchoring, no concrete pad, no special surfaces required. It can be used alone or to "fill the gap" in combination with other units.

The container is tapered to achieve superior compaction ratios and aid waste ejection, which eliminates excessive wear and tear on collection trucks. Liquid-tight construction helps ensure a sanitary environment. The drain enables water to be removed, lowering disposal costs.

This unit can be chute fed in similar applications as you would a self-contained or stationary compactor. It is not necessary to align the container opening with your wall opening.

SELF-CONTAINED COMPACTORS

Features and Benefits:

- ✔ Large 48 x 22 9/16 (1213mm x 573mm) clear top opening handles even large, bulky items.
- ✔ CYCON Control System (for use with 3-phase only) eliminates all pressure and limit switches dramatically improves cold weather performance, and reduces maintenance costs and down time.
- ✔ Fixed breaker-bar teeth help keep materials in container and charge box clear.
- ✔ Hydraulic plumbing to both sides with quick-release disconnects for added versatility in any application.
- ✔ Tri-voltage standard for easy conversion to 208-, 230-, or 460-volt power.
- ✔ Single-phase 110 with 3/4 hp motor available at no additional charge.
- ✔ Heavy-duty hinges for durability.
- ✔ Lockable panel box to increase security.
- ✔ Convenient low loading height.



Options:

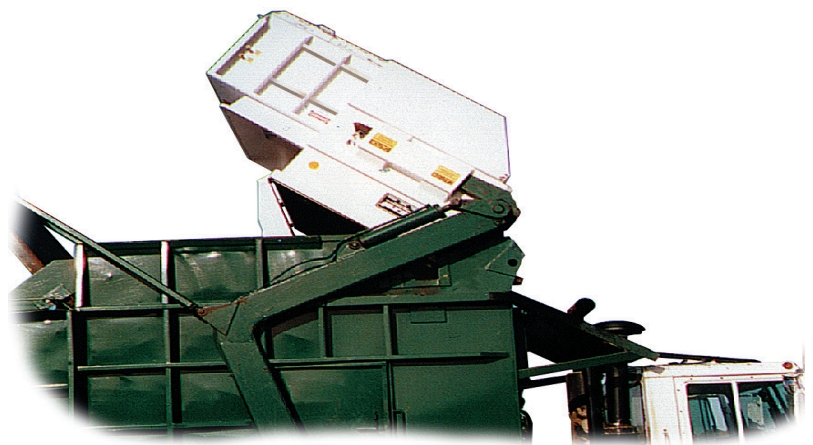
- ✔ Hopper enclosures
- ✔ Security chute
- ✔ 90-gallon cart dumpers
- ✔ Ozone generator



Easy-to-operate latch — saves on time and maintenance.



Pak'ntainer with optional hopper and plastic lids to keep contents in, rain out.

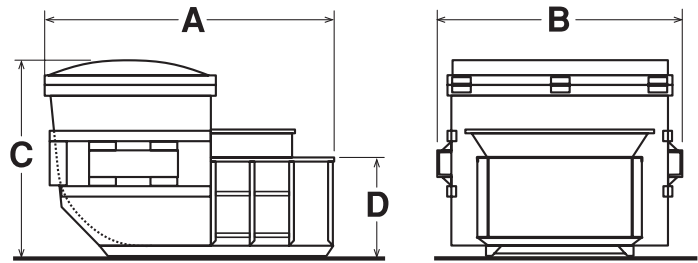


Pak'ntainer is designed for compatibility with a wide variety of collection vehicles.

Pak'ntainer® Self-Contained Compactor/Container

Dimensions and Specifications

Specifications		
Total Capacity	5.5 cu yd	4.6 m ³
Compactor Capacity	0.49 cu yd	0.38 m ³
Clear Top Opening	48"W x 22 9/16" L	1,219mm x 573mm
Ram Face Size	47 3/4"W x 19 3/4" H	501mm x 1,212mm
Total Weight	2,791 lbs	1,265kg
Lift Weight	2,645 lbs	1,199kg
Performance Characteristics		
Cycle Time	28 sec.	28 sec.
Force	19,800 lbf	88 kN
Ram Face Pressure	20.6 psi	142 kPa
Ram Penetration	4"	102mm
Electrical & Hydraulic Equipment		
Motor	3 hp	2.2kW
Pump	3 gpm	11 L/min
Pressure	2,400 psi	166 bar
Cylinder Bore	2 1/2" Ø	64mm
Cylinder Rod	1 1/4" Ø	32mm
Cylinder Shaft	18 1/2"L	470mm
Reservoir	5 gal	19 liters



Model	A	B	C	D	Weight
5.5 Cu. Yd	97 3/16"	80 1/4"	73 9/16"	33 1/16"	2,645 lbs.
	2,469mm	2,038mm	1,868mm	840mm	1,200 kg

Compactor Rental and Leasing Programs Available

For detailed specifications, recommendations, or free economic studies comparing various systems, contact Marathon Customer Care at **1-800-633-8974**

RAMJET
Stationary and self-contained compactors.

Authorized Dealer:



Marathon Equipment Company
P.O. Box 1798
Vernon, AL 35592-1798
800.633.8974
www.marathonequipment.com
NJPA Contract #060612-ESG



Pictures in this literature are illustrative only. Specifications are subject to change without notice in order to accommodate improvements to the equipment. Complies with ANSI standard Z245.2, all applicable OSHA Regulations, and certified under WASTEC's Stationary Compactor Certification Program. Products must be used with safe practice and in accordance with said regulations and standards.